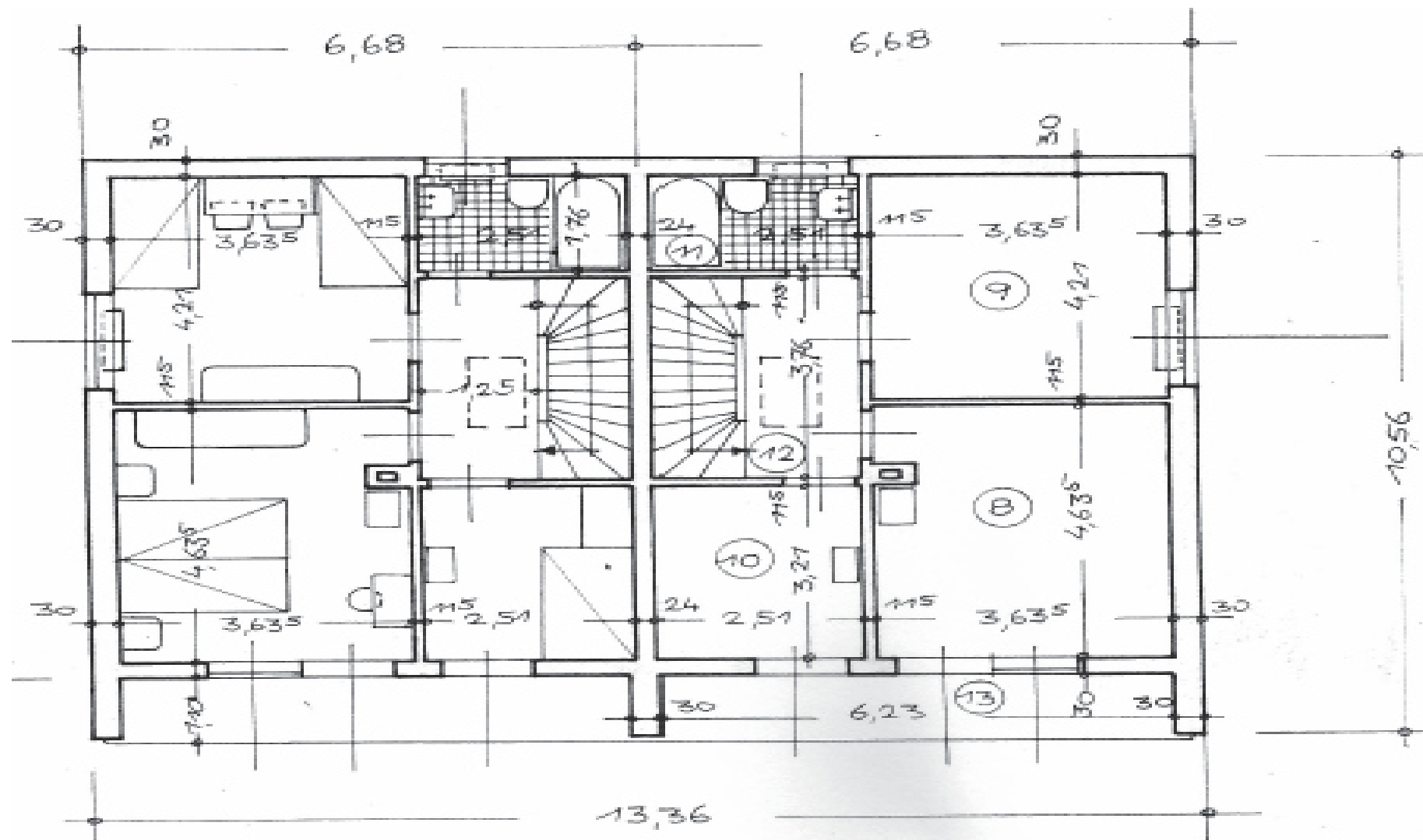


Hand-drawn architectural floor plan of a two-story building. The plan shows a central corridor with two staircases. On the left is a large room (6,26) with a seating area and a kitchen (K). On the right are two smaller rooms (6,26) and a kitchen (K). The plan includes various dimensions, room numbers, and a north arrow pointing towards the top right.

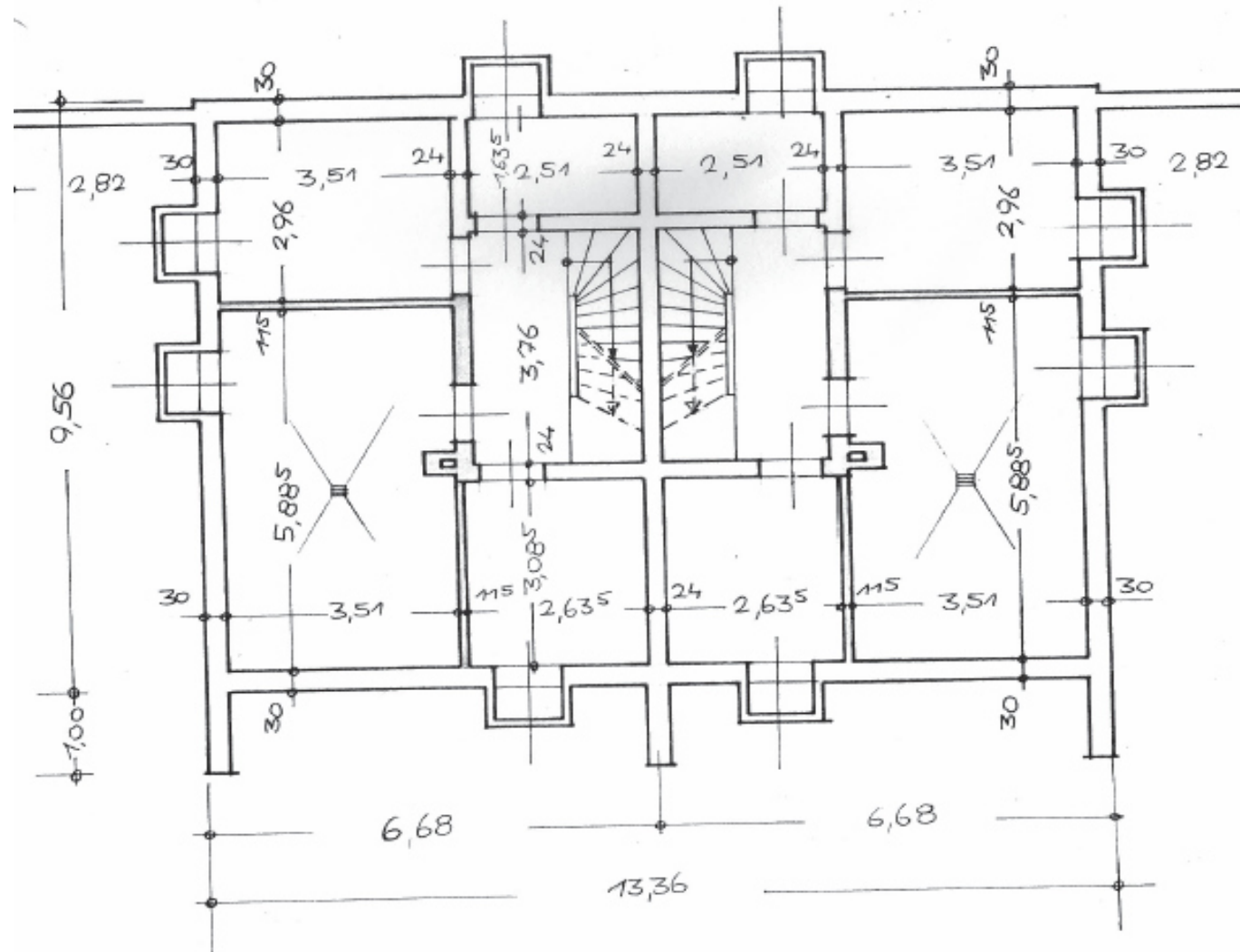
ERDGESCHOSS

Haus West



OBERGESCHOSS

Haus West



KELLERGECHOSS