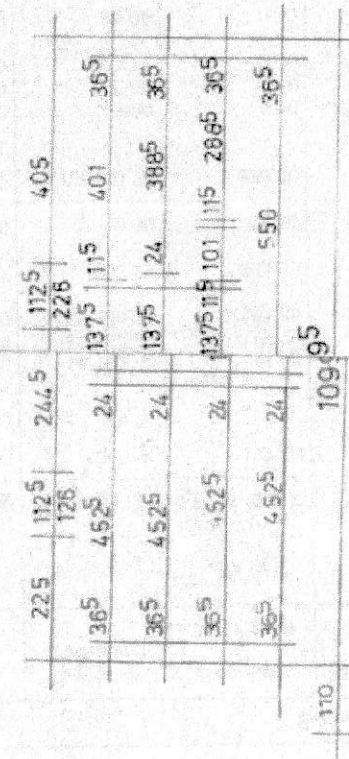


GEMEINDE-STR.  
- 0.30



SCH



1.12

887

$142^5$  |  $112^5$  | 341 | |  $176$  |  $214$  |  $112^5$  | 126 |  $112^5$  |  $147^5$  | 36  
126		$226$		$226$		126		126			
$36^5$	664		$11^5$		$480^5$		$11^5$		$272^5$	$36^5$	
$36^5$	$287^5$	$11^5$	201		$11^5$	324	$11^5$		501		$36^5$
 ) )  
 1521

SICKERDOHLE  
DN 1500

~~SANDEFILTER  
DN 1500  
S. TYPENBLATT~~

KG DN 150

SCHWIMMFILTERSCHACHT  
φ 2,00 M  
(SIEHE TEKUR)

KG-ROHRE DN 100, 1% GEF.

ORR

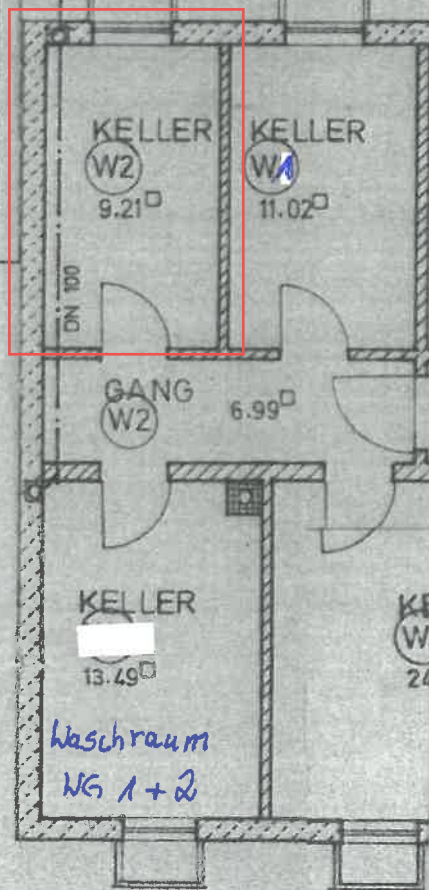
N. U. K.

30	226	115	270 <sup>5</sup>	115
95	100	158	100	121 <sup>5</sup>
	60		60	

KG-ROHRE  
2% GEF

10995

			30	365
		4075		
			3885	
		115	24	
		1375	1375	
	24			
	459	359	24	
130				
100	130			



Waschraum  
NG 1+2

149	100	186 <sup>5</sup>	100
	60		80
30	294	115	
30	508	115	

KG